



VOLLEYBALL
WESTERN AUSTRALIA

FACILITY GUIDELINES

Creating places to play for all.



About this document

The Volleyball WA Facility Guidelines (“The Guidelines”) aims to provide a resource of volleyball facility requirements for use by the volleyball community, government and other stakeholders when considering and/or planning volleyball facilities.

These Guidelines play an important part of Volleyball WA’s Facility Strategy. Facilities are a key component in supporting the growth of volleyball participation and attracting large scale events.

The guidelines provide facility requirements and details required for indoor, beach and grass volleyball. It outlines the required facility components based on the level played and where the facility sits within the hierarchy model (see adjacent table).

These Guidelines are intended to support stakeholders to appropriately scope, plan and design improved facilities. Volleyball facilities are diverse across Western Australia and are fundamental to participating in the game of volleyball. It is critical they are provided to the highest quality and standard possible and maximise the use, enjoyment and experiences of both spectators and players no matter what level.

The guidelines have been developed based on the Federation Internationale De Volleyball (FIVB) federation, Official Volleyball Rules 2021-2024 and the Official Beach Volleyball Rules 2021-2024. Other information has been provided by Volleyball South Australia.

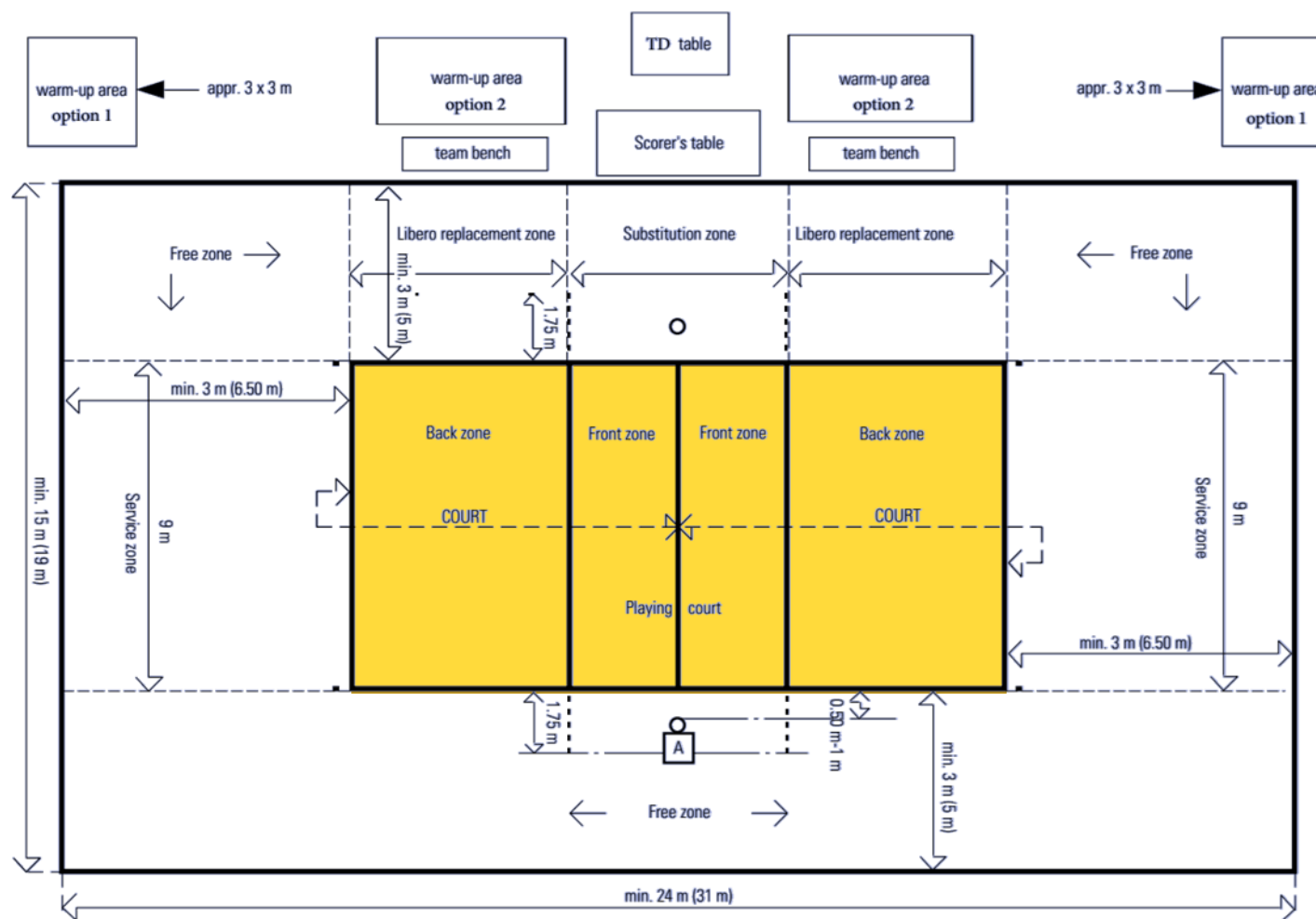
TIER	INDOOR FACILITY	BEACH FACILITY	GRASS FACILITY
1	International, National, State Events and Top Divisions in WA State League	National and State Tour Events or Beach Volleyball major fit for purpose venue	Major Grass events
2	Lower Divisions in WA State League, State School events, Academy training and top division of Junior League	Major School beach festivals, State Beach Series Events, Satellite Recreation fit for purpose venue and Academy training	Minor Grass events or regular competition
3	Club/Association training, Recreational competitions, lower division of Junior League and Kid Volley-Spikezone	Minor School Beach festivals, Social series events and Spikezone	Regular social competition and events and Kid Volley-Spikezone

Figure 01 | Facility Hierarchy Model

Indoor volleyball facility requirements

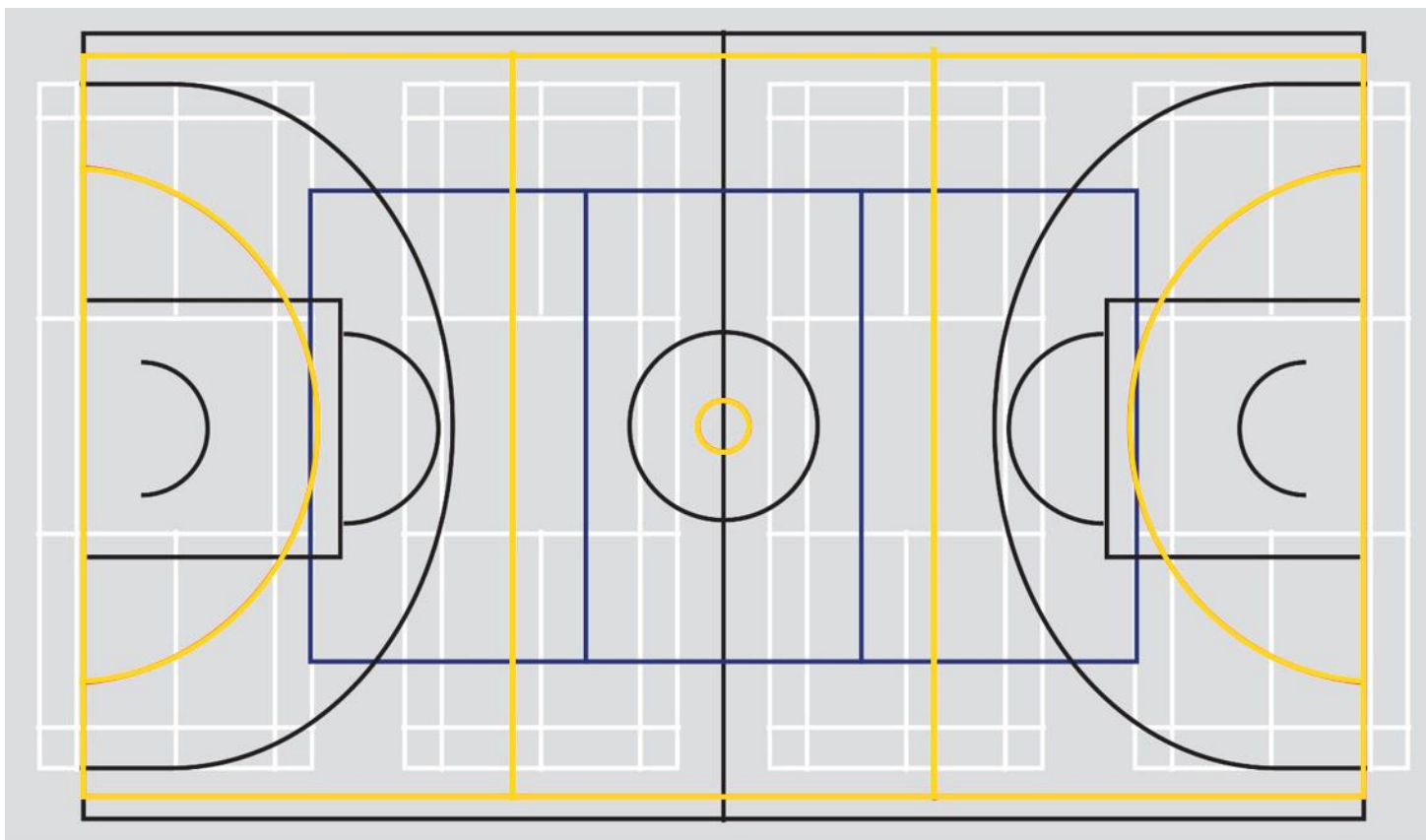
# COURTS	COURT SPECIFICATIONS		EQUIPMENT	OTHER AMENITIES
Tier 1 (Suitable for International, National & State events) <i>VWA preference is for Top Divisions of the WA State League to be played in venues that meet these specifications.</i>				
3-12 full international standard courts with provisions for volleyball posts (at least 1 show court with grandstanding).	18 x 9m surrounded with 3m side and end line free zones. Posts 0.5-1m outside the side lines. The free playing space is a minimum of 7m high from the playing surface. Lighting minimum 300 lux. Wooden or synthetic surface. Lines are a light colour which is different from the colour of the floor and from any other lines (5cm wide).	To host FIVB, World and Official Competitions; <ul style="list-style-type: none">• lighting should not be less than 2000 lux measured at 1m above the surface of the playing area.• White colour line marking. Additional line markings may be required.• Temperature shall not be below 10°C• 5m side and 6.5m end line free zones and 12.5m high free playing space• Posts 1m outside the side lines.	<ul style="list-style-type: none">• 1 Professional quality net per court• 2 Posts per court• 2 Post pads per court• 2 Antennae per court• 1 Referee stand per court with padding (1 adjustable stand for show court)• Team benches with 10-13 chairs each per court• Scorers table with 3 chairs per court	<ul style="list-style-type: none">• Food/drink outlet(s)• Licensed (or capable of being) facility• Spectator seating• Spectator toilet facilities for both genders• Disabled access and facilities• Gender equity changeroom facilities that can accommodate for 12 players and coaching staff.• Drinking water• Function/VIP room available• First aid room• Operations/officials room/s• Parking available on-site• Electronic scoreboard• Access to WIFI and/or wired network highly desirable
Tier 2 (WA State League, State School events, Academy training and top division of Junior League)				
2-6 full international standard courts with provisions for volleyball posts	18 x 9m surrounded with 3m side and end line free zones The free playing space is a minimum of 7m high from the playing surface. Lighting minimum 300 lux	Wooden or synthetic surface. Lines are a light colour which is different from the colour of the floor and from any other lines (5cm wide).	<ul style="list-style-type: none">• 1 Professional quality net per court• 2 Posts per court• 2 Post pads per court• 2 Antennae per court• 1 Referee stand per court with padding	<ul style="list-style-type: none">• Food/drink outlet (preferred)• Spectator seating (preferred)• Gender equity toilet and changeroom facilities• Disabled access and facilities• Drinking water• Suitable area to be designated for First Aid/Operations• Parking available on-site or nearby with safe access
Tier 3 (Suitable for Club/Association trainings, Recreational competitions, lower divisions of Junior League, Kid Volley- Spikezone (badminton sized courts)				
1 -3 standard court/s with provisions for volleyball posts	18 x 9m, surrounded with a minimum of 2m from the side lines and end lines. The free playing space is a minimum of 7m high from the playing surface	Wooden or synthetic surface. Lines are a light colour which is different from the colour of the floor and from any other lines (5cm wide).	<ul style="list-style-type: none">• 1 Standard quality net per court• 2 Posts per court• 2 Post pads per court• 2 Antennae per court	<ul style="list-style-type: none">• Gender equity toilets and changeroom facilities• Drinking water available• Disabled access and facilities• Suitable area available for first aid/operations• Nearby and safe access parking available

Indoor volleyball courts specifications



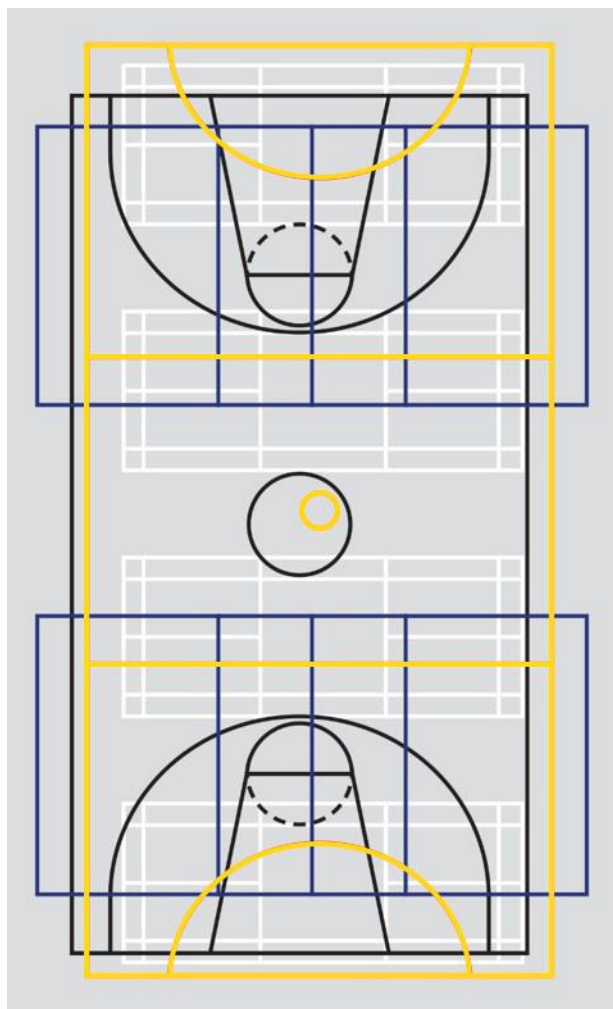
Source: [FIVB Official Volleyball Rules 2021-2024](#)

Multi lined recreation court - Tier 1 Volleyball Court



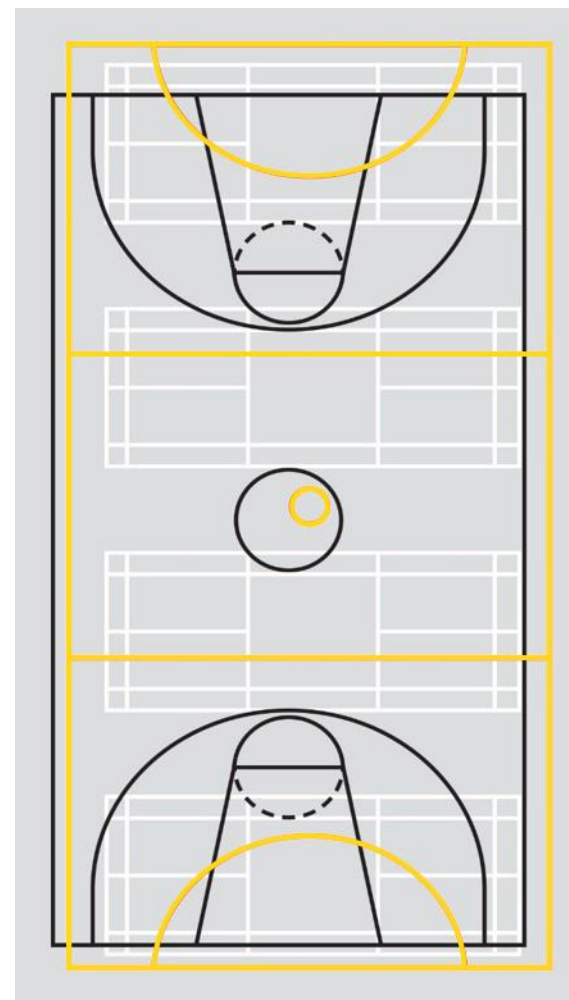
The above diagram represents a multi lined recreation court which can fit a Tier 1 volleyball court (blue line). This court is 18m x 9m in size and allows for the required free zones of 5m each side and 6.5m at the baseline.

Multi - line recreation court (Tier 2/3)



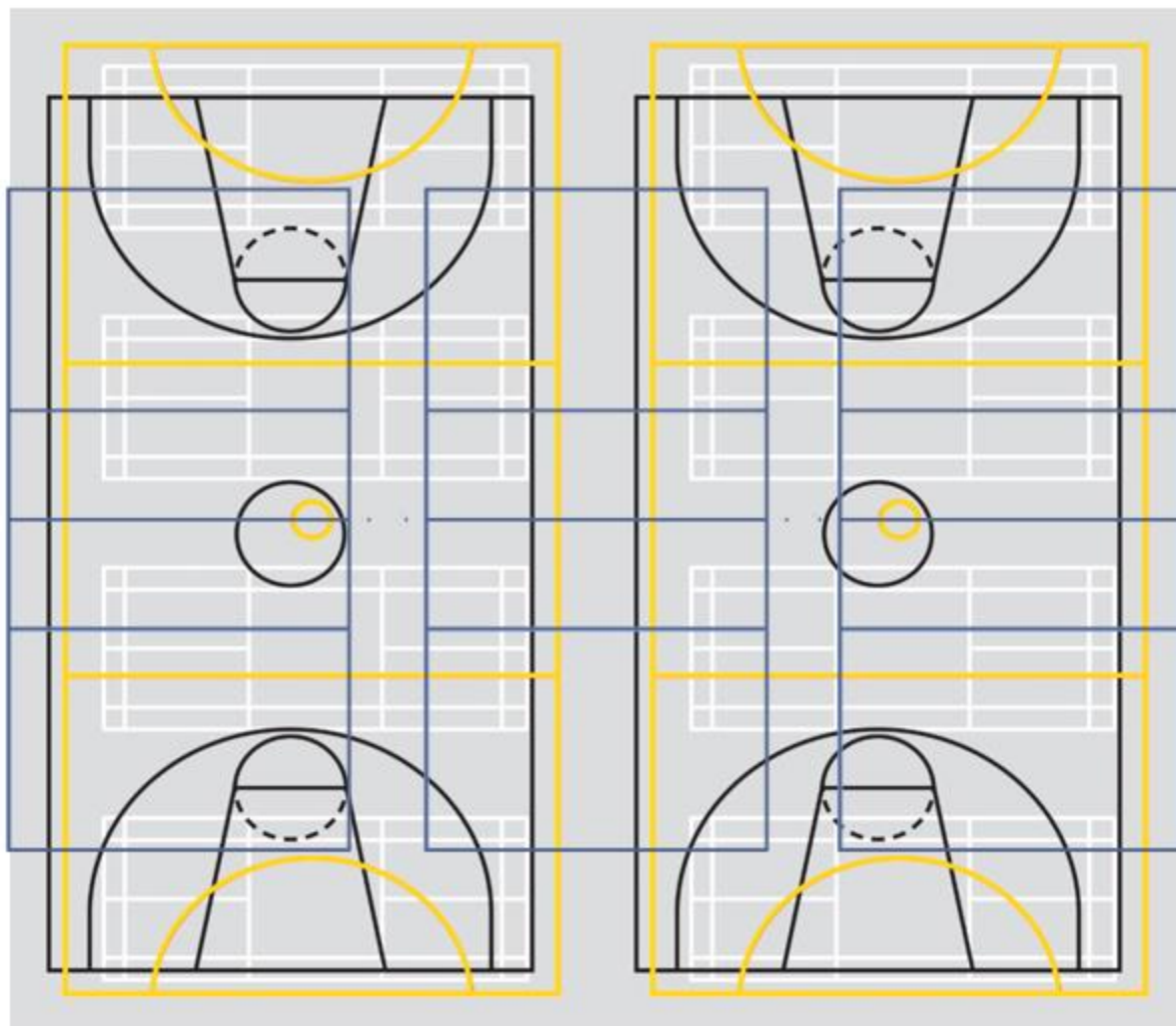
Dependent on the court size(s) and available run off, 2 x Tier 2/3 courts can fit onto one indoor court when positioned horizontally. Tier 2 courts require a total length (including free zones) of 24m and width of 15m each and Tier 3 would require a total length of 22m and width of 13m. This configuration can occur when the facility has more than 1 indoor court or has a large run off area surrounding 1 court.

Kids Volley court layout (4 x badminton court size)



Kids Volley- Spikezone games are usually played on badminton size courts. Therefore the above diagrams shows that 4 courts can fit onto one indoor court.

Multi - line recreation court (Tier 3)

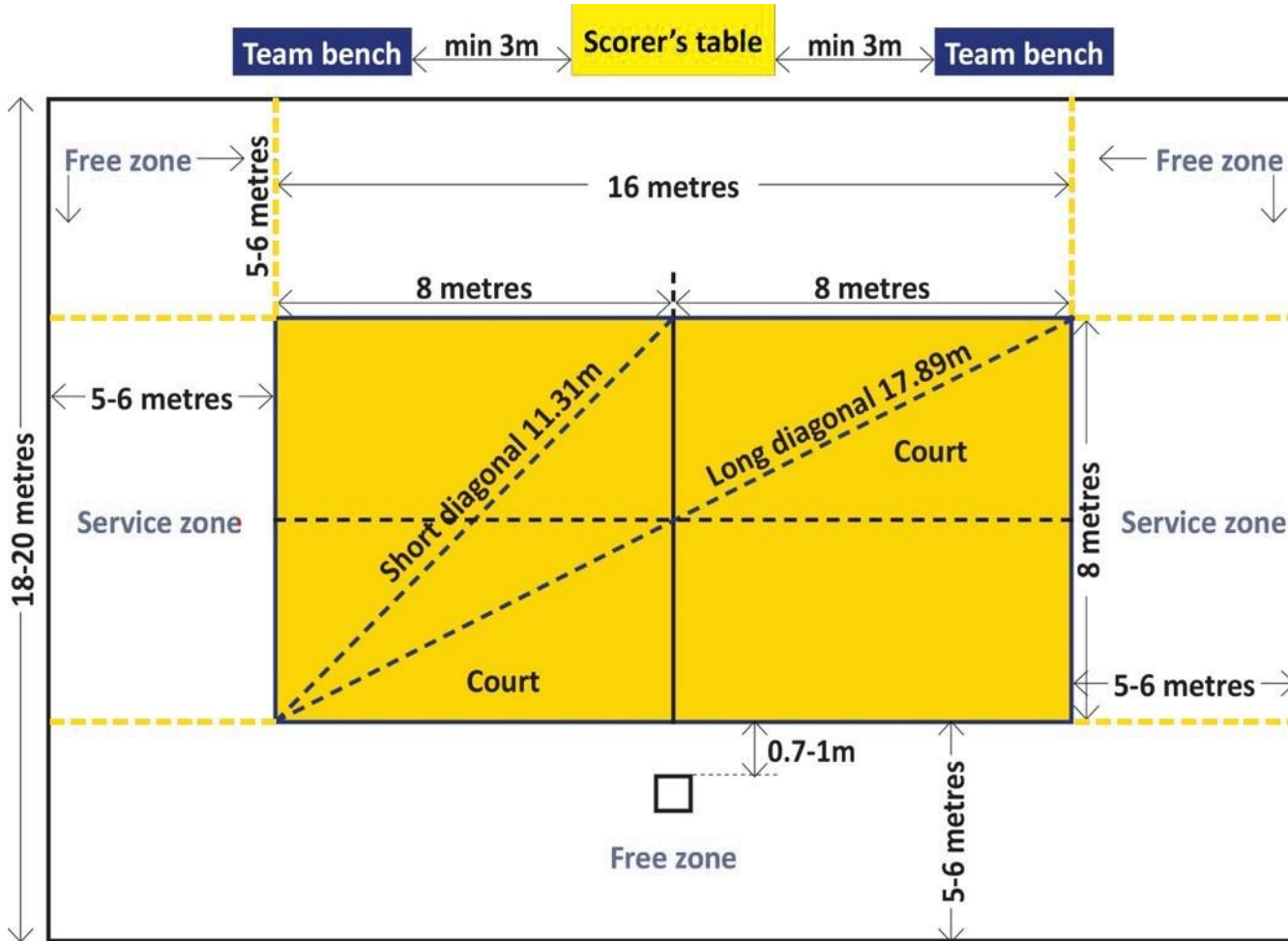


Dependent on the court sizes and available run off, 3 x Tier 3 volleyball courts can fit onto two basketball courts when positioned vertically. Each tier 3 court would require a total length of 22m and width of 13m. Each court should have their own pair of posts (no joint posts).

Beach volleyball facility requirements

# COURTS	COURT SPECIFICATIONS		EQUIPMENT	OTHER AMENITIES
Tier 1 (Suitable for National and State Tour Events or Beach Volleyball major fit for purpose venue)				
3-10 full national standard courts. Permanent posts provided which can be adjusted to the required net height.	<p>16 x 8 m, surrounded by a free zone 5m-6m from the end lines/side lines. Posts 0.70 -1m outside lines.</p> <p>Free playing space is a minimum of 7m high from the playing surface.</p> <p>Levelled sand, 40cm deep, as flat and uniform as possible, free of rocks, shells and unsafe materials.</p>	<p>To host FIVB, World and Official Competitions;</p> <ul style="list-style-type: none">• 5m-6m free zone• 12.5m high free playing space• Must be at least 40cm deep and composed of fine loosely compacted grains• Lighting 1000 to 1500 lux measured at 1m for night games.	<ul style="list-style-type: none">• 1 Professional quality net per court• 2 Posts per court• 2 Post pads per court• 2 Antennae per court• 1 dark boundary line (5cm wide)• 4 sand anchors• 1 Referee stand per court with padding• Team benches with 2-3 chairs each per court• Scorers table with 2 chairs per court	<ul style="list-style-type: none">• Food/drink outlet(s)• Access to running water• Access to electricity• Ability to secure licensed area for VIP tent/s or a bar onsite(venue)• Space for Grandstands enclosing Show Court/s or spectator tables/chairs under shelter• Gender equity toilet and change-room facilities• Disabled access and facilities• Space for event marquees e.g. VIP, First Aid, Operations, Media
Tier 2 (Suitable for major Schools Beach Festivals, State Beach Series events, Satellite Recreational Beach Volleyball fit for purpose venue and Academy trainings)				
2-8 full national standard courts and/or plus space for up to 20 temporary courts to be set up. Permanent posts provided for 3-8 courts which can be adjusted to the required net heights.	<p>16 x 8 m, surrounded by a free zone 3m from the end lines/side lines</p> <p>The free playing space is a minimum of 7m high from the playing surface.</p>	<p>Levelled sand, as flat and uniform as possible, free of rocks, shells and unsafe materials.</p>	<ul style="list-style-type: none">• 1 Professional quality net per court• 2 Posts per court• 2 Post pads per court• 2 Antennae per court• 1 Referee stand with padding for show court• 1 dark boundary line (5cm wide) per court• 4 sand anchors per court• 1 portable Beach Kit per temporary court	<ul style="list-style-type: none">• Food/drink outlet(s) nearby (preferred)• Access to running water (preferred)• Access to electricity (preferred)• Gender equity toilet and change-room facilities• Disabled access and facilities• Tables/chairs under shelter (preferred for venue)• Space for event marquees e.g. Operations/First Aid (n/a for venue)
Tier 3 (Suitable for minor Schools Beach Festivals, Social Series events and Kid Volley-Spikezone (badminton sized courts))				
1-12 mixture of permanent/temporary courts Temporary or permanent nets and poles provided for 1-12 courts which can be adjusted to the required net heights.	<p>16 x 8 m, surrounded by a free zone 3m wide on sides for permanent courts, and 2m for temporary courts</p> <p>The free playing space is a minimum of 7m high from the playing surface.</p>	<p>Levelled sand, as flat and uniform as possible, free of rocks, shells and unsafe materials.</p>	<ul style="list-style-type: none">• 1 standard quality net per court• 2 Posts per court• 2 Post pads per court• 2 Antennae per court• 1 dark boundary line (5cm wide) per court• 4 sand anchors per court• 1 portable Beach Kit per temporary court	<ul style="list-style-type: none">• Food/drink outlet(s) nearby (preferred)• Access to running water (preferred)• Access to electricity (preferred)• Gender equity toilet and change-room facilities• Disabled access and facilities• Space for event marquees e.g. Operations/First Aid

Beach volleyball court specifications

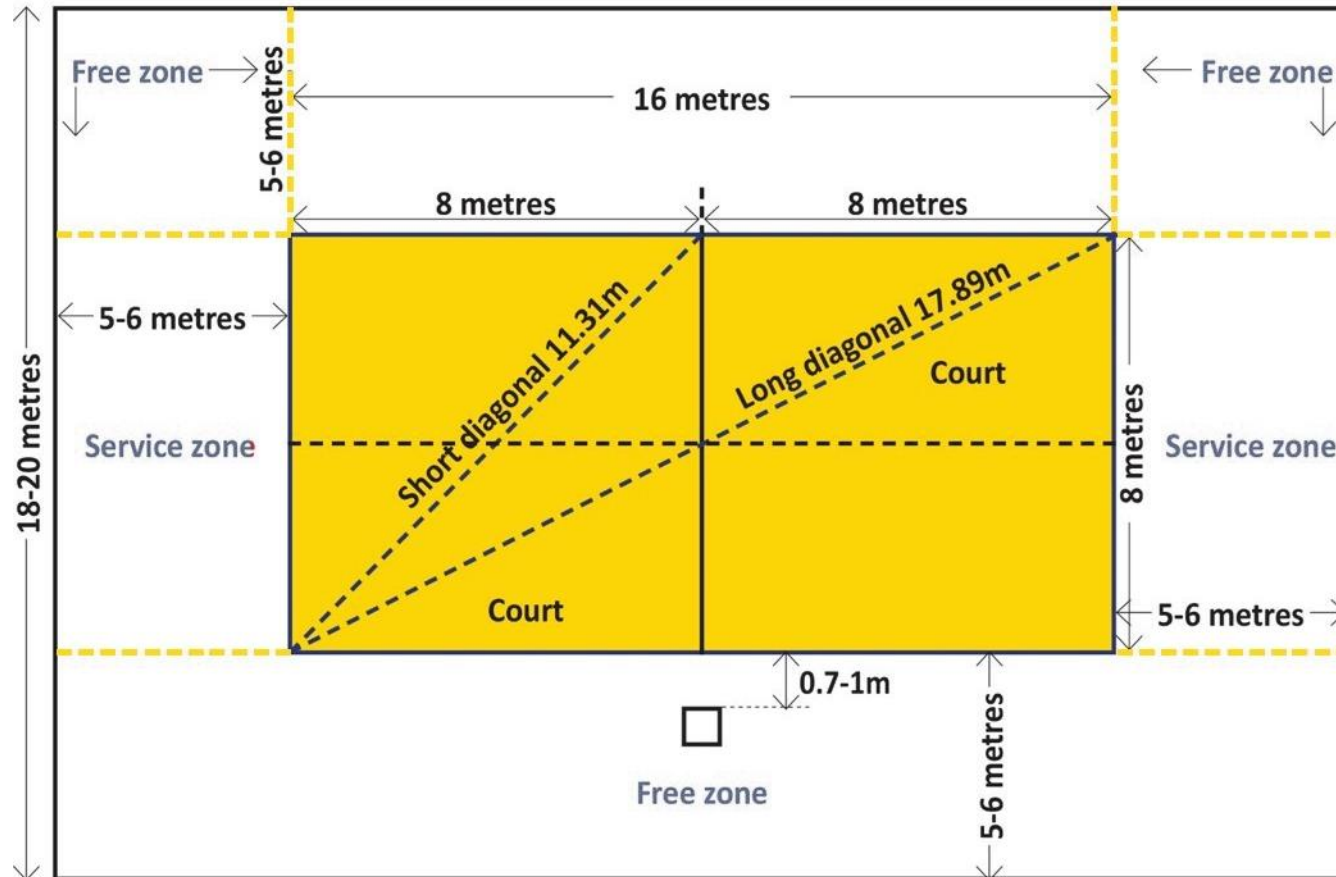


Source: [FIVB Official Beach Volleyball Rules 2021-2024](#)

Bowls conversion to Beach volleyball facility requirements

# COURTS	COURT SPECIFICATIONS	EQUIPMENT	OTHER AMENITIES
Tier 3 (Suitable for minor Schools Beach Festivals, Social Series events and Kid Volley-Spikezone (badminton sized courts))			
1-12 mixture of permanent/temporary courts.	16 x 8 m, surrounded by a free zone 3m wide on sides for permanent courts, and 2m for temporary courts	Ensure there is adequate gravel drainage.	<ul style="list-style-type: none">• 2 Posts per court• 1 standard quality net per court• 1 dark boundary line (5cm wide) per court• 4 sand anchors per court• 1 ball
Temporary or permanent nets and poles provided for 1-12 courts which can be adjusted to the required net heights.	The free playing space is a minimum of 7m high from the playing surface.	Remove greens and level surface. Place a base of weed matting down.	<ul style="list-style-type: none">• Access to running water (preferred)• Access to electricity (preferred)• Gender equity toilet and change-room facilities• Disabled access and facilities
Poles must be stabilized in sand at least 1m deep. Metal poles can be stabilized with concrete or a bracket.		Top surface must be composed of sand to a depth of 40cm, as flat and uniform as possible, free of rocks, shells and anything else which can represent risks of cuts or injuries to the players.	

Bowls Conversion to Beach volleyball court specifications



Source: [FIVB Official Beach Volleyball Rules 2021-2024](#)

Grass volleyball facility requirements

# COURTS	COURT SPECIFICATIONS	EQUIPMENT	OTHER AMENITIES
Tier 1 (Suitable for major Grass Events)			
<p>4-20 Mixture of permanent and temporary standard courts.</p> <p>Temporary or permanent nets and poles provided which can be adjusted to the required net heights</p>	<p>16 x 8 m, surrounded by a free zone 3m wide on sides</p> <p>Free playing space shall measure a minimum of 7 m in height from the playing surface. Tree overhang and bush clearance.</p>	<p>The surface must be composed of grass, free of rocks, sticks and anything else which can represent risks of cuts or injuries to the players.</p> <ul style="list-style-type: none"> • 1 standard quality net per court • 2 Posts per court • 2 Post pads per court • 2 antennae per court • 1 boundary line with anchors 	<ul style="list-style-type: none"> • Food/drink outlet(s) • Access to running water • Access to electricity • Ability to secure licensed area for VIP tent/s or access to onsite Club rooms • Space for grandstands enclosing Show Court/s or spectator tables/chairs under shelter • Access to gender equity toilet and change-room facilities including disabled amenities (onsite for venue) • Space for event marquees e.g. VIP, First Aid, Operations, Media (n/a for venue)
Tier 2 (Suitable for minor Grass events or regular competitions)			
<p>3-8 full standard courts plus space for up 20 temporary courts to be set up.</p> <p>Temporary or permanent nets and poles provided which can be adjusted to the required net heights</p>	<p>16 x 8 m, surrounded by a free zone 3m wide on sides</p> <p>The free playing space is a minimum of 7m high from the playing surface.</p>	<p>The surface must be composed of grass, free of rocks, sticks and anything else which can represent risks of cuts or injuries to the players.</p> <ul style="list-style-type: none"> • 1 standard quality net per court • 2 Posts per court • 2 Post pads per court • 2 antennae per court • 1 boundary line with anchors • 1 portable grass kit per temporary court 	<ul style="list-style-type: none"> • Food/drink outlet(s) nearby (preferred) • Access to running water (preferred) • Access to electricity (preferred) • Access to gender equity and disability toilet and change-room facilities including disabled amenities • Space for event marquees e.g. Operations/First Aid
Tier 3 (Suitable for regular Social competitions and events and Spikezone (badminton sized courts)			
<p>1-12 temporary courts.</p>	<p>16 x 8 m, surrounded by a free zone 2m wide on sides</p> <p>The free playing space is a minimum of 7m high from the playing surface.</p>	<p>The surface must be composed of grass, as flat and uniform as possible, free of rocks, sticks and anything else which can represent risks of cuts or injuries to the players.</p> <ul style="list-style-type: none"> • 1 portable Grass kit / Spikezone kit per court 	<ul style="list-style-type: none"> • Access to running water (preferred) • Access to gender equity toilet and change-room facilities including disabled amenities nearby

Additional Resources

- FIVB Official Indoor Volleyball Rules 2021-2024 (Chapter 1)
https://www.fivb.com/en/volleyball/thegame_glossary/officialrulesofthegames
- FIVB Event Regulations-Indoor (Chapter 4) <https://www.fivb.com/-/media/2020/fivb%20corporate/fivb/legal/event%20regulation/updated/fivb%20event%20regulations%20202020201113clean.pdf?la=en&hash=6406948D18B0915DA35E8DC9725D47AD>
- FIVB Official Beach Volleyball Rules 2021-2024 (Chapter 1)
https://www.fivb.com/en/beachvolleyball/thegame_bvb_glossary/officialrulesofthegames
- FIVB Beach Volleyball Handbook (Chapter 3)
http://www.fivb.org/EN/BeachVolleyball/Document/2020/Handbook/2019_Handbook_Clean.pdf
- Volleyball USA- Beach Court Construction <https://www.volleyballusa.com/how-to-build-your-own-sand-court/>



Department of
Local Government, Sport
and Cultural Industries



alcohol
thinkagain



fortix®



For more information or to discuss your potential project please contact Volleyball WA:

Phone: (08) 9228 8522

Email: info@volleyballwa.com.au

Version 6 – September 2022.