



**VOLLEYBALL  
WESTERN AUSTRALIA**

**ALCOHOL. THINK AGAIN  
BEACH VOLLEYBALL  
TOUR**

**Competition Regulations  
2019/2020**



## CONTENT

Content.....	2
Welcome .....	4
1. Aims of the Tour .....	4
2. Alcohol. Think Again Tour Staff .....	4
3. Beach Calendar .....	5
4. Beach Event 2019/2020 Locations .....	5
5. VWA Memberships.....	5
6. Entry Fees.....	6
7. Entry Process .....	6
8. Local Wildcards.....	8
9. Interstate and International Wildcards .....	9
10. WildcardS Seeding.....	9
11. Force Majeure .....	10
12. Withdrawal and Failure to Attend .....	10
13. Competition Formats .....	11
14. Format by Round.....	12
15. Pool Play Points Allocation.....	14
16. Placement of Teams into Grades / Seeding .....	14
17. Pool Seeding Distributions.....	16
18. Playing Uniforms .....	17
19. Competition Balls .....	18
20. Rules.....	18
21. Duty Requirements .....	18
22. Penalties for not Fulfilling a Duty .....	19
23. Whistles .....	19
24. Court Allocations .....	20
25. Forfeits.....	20
26. Light Disputes .....	20
27. Coaches .....	20

What a coach can do during a game:.....	21
What a coach cannot do during a game:.....	21
28. First Aid Supplies .....	21
29. Points Allocation For Season Rankings .....	21
30. Prize Money .....	23
31. Ranking Points for Teams on National Tour.....	24
32. National Rating System .....	24
33. Personal Sponsorship.....	24
34. Policies .....	24
35. Sun Protection PolicyTerms and Conditions .....	25
Alcohol. Think Again .....	25
Smoke Free.....	25
Players Responsibility .....	25
Grievance or Complaints .....	25
Players Code of Behaviour .....	26
36. Do you need a Partner / Team?.....	26
37. Volunteers and Paid Work .....	26
38. VWA Clause .....	26

## WELCOME

On behalf of Volleyball WA, welcome to this summer's Alcohol. Think Again WA Beach Volleyball Tour (ATABT).

Volleyball WA welcome back the naming right sponsor Healthway with the Alcohol. Think Again message. We look forward to all athletes supporting this message and the importance that this message holds in our community.

## 1. AIMS OF THE TOUR

The ATABT goals are to:

1. Provide a competition environment for WA's elite, competitive and developing athletes (in line with the Volleyball WA FTEM model).
2. Showcase beach volleyball to audiences across WA
3. Provide a pathway for WA athletes to progress to an international level
4. Provide marketing opportunities for Volleyball WA's commercial partners

## 2. ALCOHOL. THINK AGAIN TOUR STAFF

The WA tour will be promoted and managed by Volleyball WA. Volleyball WA has appointed the following staff to ensure the smooth running of each tournament.

### **VWA Competitions and Events Coordinator:**

Jason Laverdure (e): [competitions@volleyballwa.com.au](mailto:competitions@volleyballwa.com.au)

### **VWA Acting Participation and Development Manager:**

[participation@volleyballwa.com.au](mailto:participation@volleyballwa.com.au)

### **Volleyball WA Beach Committee:**

Matt Hodges (Chairperson), Robyn Kuhl (CEO) Jason Laverdure (Executive Officer), Jayson Fox, Chana Ongwaranon, Nick Wells, Tara Banks, Marty Bertuleit and Christopher Adams.

All other staff contacts are available at the VWA website: [www.volleyballwa.com.au](http://www.volleyballwa.com.au)

All rankings, technical questions, wildcard allocations, disputes or judiciary procedures will be submitted to the vwa competitions & events coordinator.

Any questions or issues will be raised with members of the Volleyball WA Beach Committee, if required. If any of the above people are playing in the tournament and the issue directly affects them, they will abstain from discussing or voting on the issue.

### 3. BEACH CALENDAR

The 2019/2020 Beach Volleyball calendar includes the ATABT, VWA Junior Beach Events, Perth Beach Volleyball League and Indoor Beach Volleyball Season .

The calendar can be found at: <https://www.volleyballwa.com.au/competitive/competitions/Beach>

### 4. BEACH EVENT 2019/2020 LOCATIONS

- **Bunbury (Koombana Bay):**  
Anchor Cove, Bunbury - off Koombana Drive from Eelup Roundabout
- **Busselton:**  
Busselton Foreshore, Busselton – between the Equinox Café & the Busselton Jetty.
- **City Beach:**  
Challenger Parade, City Beach - north side of Clancy's
- **Inner City Beach:**  
180 Charles St, West Perth - Volleyball WA Office
- **Sand Volley Nedlands:**  
Cnr of Smyth and Verdun Roads, Nedlands
- **Scarborough:**  
Scarborough Beach Rd, Scarborough – In front & north of Observation City Hotel.
- **Sorrento Beach**  
West Coast Dr, Sorrento WA 6020

### 5. VWA MEMBERSHIPS

All players competing in the ATABT are required to hold a current VWA membership. Membership information categories are on the VWA website and purchase your membership via our member portal: <https://www.volleyballwa.com.au/vwa/membership/>

VWA staff will confirm your membership status prior to accepting your nomination into a tournament. If you are unsure of your current membership status, to become a member please contact the VWA office.

Membership payments are non-refundable and non-transferable.

Entries by teams who have a player/s who are not members will not be placed into the tournament and will not be refunded.

\*Please note that all memberships are valid from the date of payment through to the 31<sup>st</sup> March 2020.

## 6. ENTRY FEES

Entry fees are as follows:

EVENT	NOMINATION FEE PER TEAM
WA Beach Tour 2-day event (Adult)	\$98.00 per team
WA Beach Tour 2-day event (Junior U19)	\$81.00 per team
WA Beach Tour 1-day event (Adult)	\$87.00 per team
WA Beach Tour 1-day event (Junior U19)	\$71.00 per team
WA Juniors Beach Tour U15 (3 players)	\$81.00 per team
WA Beach State Championships (Adult)	\$108.00 per team
WA Beach State Championships (Junior U19)	\$91.00 per team
WA Single-set event	\$59.00 per team

## 7. ENTRY PROCESS

For the purposes of this section each tournament starts on the Saturday of each beach event listed in the calendar.

### 21 DAYS (MINIMUM) BEFORE THE TOURNAMENT

#### ENTRIES OPEN

Event registrations and payments must be completed via the VWA member portal: <https://volleyballwa.fortix.net.au/>

### \*9 DAYS BEFORE THE TOURNAMENT AT 5PM

#### ENTRIES CLOSE.

Registrations submitted after this time will be subject to a \$25 late entry fee and will be placed on to the reserve list for that event. Reserve list teams will be added to the event if their addition assists the tournament in terms of its competition structure. If a reserve team is not added to the event their entry fee can be credited to their next tournament or refunded.

Only payments of the full team amount will be accepted.

**Wildcard Applications also close at this point – see section 8 for more information on wildcards.**

---

#### 8 DAYS BEFORE THE TOURNAMENT AT 5PM

##### ENTRY LIST RELEASED

A preliminary entry list will be emailed to all participants based on the email address provided on entry and uploaded to the VWA website.

---

#### 5 DAYS BEFORE THE TOURNAMENT AT 5PM

##### SEEDED ENTRY LIST RELEASED

This will be emailed to all participants based on the email address listed on entry form and uploaded to the VWA website.

---

#### 4 DAYS BEFORE THE TOURNAMENT AT 12PM

##### PROTESTS

Any protests relating to seeding must be lodged before this time. Failure to do so demonstrates the teams listed accept their advised seeding position.

---

#### 4 DAYS BEFORE THE TOURNAMENT AT 5PM

##### SEEDED ENTRY LIST CONFIRMED

---

#### 2 DAYS BEFORE THE TOURNAMENT BETWEEN 9AM AND 5PM

##### DRAW RELEASED

The tournament draw will be emailed to all participants based on the email address provided on entry form and uploaded to the VWA website.

Withdrawal from the tournament after this point will result in the team receiving last place in their allocated division – *see section 12 for more information on withdrawals.*

---

#### DAY OF THE TOURNAMENT

6:00am: \*\*Preliminary enquiry / sign in

Teams must sign in by 6:15am to enter the draw. Only one team member is required to sign in. Failure to sign in by this time results in disqualification, unless the VWA Tournament Director is advised prior to the technical meeting start time. Athletes under the age of 18 must have a parent or guardian sign them in for the tournament.

6:15am: \*\*Technical Meeting (Except for Competitive and Junior Divisions)

7:00am: Games Commence

**In 2-day events, results will be posted on Bracket Pal. It is the players' responsibility to check with the Tournament Director and Bracket Pal to find out pool placings and match updates.**

---

## 2 DAYS AFTER THE TOURNAMENT

RESULTS RELEASED.

Results will be emailed to all participants based on the email address listed on the entry form and uploaded to the VWA website.

---

## 3 DAYS AFTER THE TOURNAMENT

OPPORTUNITY TO PROTEST RESULTS CLOSE.

*\*The entry deadline for Round #5 - WA Open local players will be 23/01/2020 International and Interstate players*

*\*\* It is intended that the ATABT Round 1 and Regional rounds ATABT Round 4 and Round #6 will have a morning and afternoon sessions for pools, therefore Preliminary Enquiry and Technical Meeting times will vary. These will be advised on the draw.*

## 8. LOCAL WILDCARDS

Wildcard applications must be submitted with entry.

Wildcards will not be allocated to players/teams that have played an event and want to move up a division. Results and player ratings will determine your entry and eligibility.

To apply for a wildcard entry, please complete the section on the entry form relevant to the event.

The number of wildcard entrants offered at a tournament, is at the discretion of VWA and will be considered according to the circumstances of each tournament. Please be aware that it is not a requirement for all positions to be allocated). Regional teams will be considered strongly for regional events especially when competing in their "home town".

Teams can apply for a wildcard for seeding for Round #1, if a player with no ATABT seeding information is playing and has a significant history in volleyball or beach volleyball and hasn't had access to ATABT events over the past 12 months.

All wildcards are considered on a case-by-case basis, in consultation with the VWA Beach Volleyball Committee.

Athletes who are returning from pregnancy or long-term injury are encouraged to apply for wildcards, as their applications will be strongly considered.



A wildcard will only be applicable in a situation where one player of a team (or both) does not have valid points and has not have access to an ATABT qualifying event in the current year.

In a situation where one player of the team has met the above criteria and one has not, then the player who has not met the criteria will receive the seeding points of the player who has qualified for the division should the wildcard be granted. The total points of that pairing will then determine the division they play in.

When both players have not met the above mentioned criteria the below factors will be considered when assessing the wildcard application:

1. Playing history /profile
2. Support of WA Volleyball and ATABT

Reason for not meeting the necessary qualification criteria (ie. international travel, pregnancy, other commitments (Please specify)

## 9. INTERSTATE AND INTERNATIONAL WILDCARDS

The number of interstate and international wildcard entrants offered at a tournament will be limited to two teams per AAA event, except at Round # 5 WA Open. VWA will take the following into consideration when awarding these wildcards:

- Playing history(World tour and National tour points)
- Players profile
- Support of WA Volleyball

## 10. WILDCARDS SEEDING

Wildcards will be seeded at the discretion of the VWA Beach Committee. The following will be considered when seeding teams:

- Playing history
- Players profile
- Support of WA Volleyball and the ATABT
- Competition Format
- Wildcard seeding will be determined by the beach volleyball committee using the below process:
  1. An assessment will be made by the committee to determine whether the teams' expected finishing position will fall within the top third/middle third/bottom third of the draw. Where the draw is not equally divisible by 3, the position will be rounded to the nearest whole number. ie. 10 team draw, 3/3/4
  2. Once the assessment has been made, the seeding position in that section of the category will be determined randomly.

## 11. FORCE MAJEURE

A force majeure wildcard can be used if a player becomes injured after the entry deadline is closed, but before the technical meeting or before first game of the tournament has commenced. The healthy player is able to replace their partner with somebody who is not entered in the event and they will retain their teams seeding. If the new team has a higher seeding than the team which was originally entered, the new team will benefit from this change, but only within the same grade.

When a force majeure wildcard is used, a medical professional must supply a medical certificate on behalf of the injured player. If a certificate is not supplied by 5:00pm on the Thursday following the tournament, the team will be fined \$50 and will receive last place in the grade that they participated in and this will be recorded and added to their seed index calculation for the following event.

Repeated use/overuse of this rule will be examined by the Volleyball WA Beach Committee and penalties may apply.

To apply for a force majeure, please contact the VWA Competition's Coordinator ([competitions@volleyballwa.com.au](mailto:competitions@volleyballwa.com.au))

## 12. WITHDRAWAL AND FAILURE TO ATTEND

Teams must advise VWA if they have registered for a tournament, but are unable to play.

To officially withdraw from an event without a point's penalty, your team is required to inform the VWA Competitions and Events Coordinator in writing, prior to the draw being released (see *section 7*) and provide legitimate reason for withdrawal.

If a team withdraws after the initial draw is released they will receive last position in the grade they were allocated. This will be recorded as their seed index for that round.

Please send all correspondence via email to: [competitions@volleyballwa.com.au](mailto:competitions@volleyballwa.com.au) prior to the preliminary enquiry.

Penalties will apply to any team who fails to notify the VWA Competitions and Events Coordinator that they are withdrawing from the event.

If a team fails to attend a tournament and does not notify VWA Competitions and Events Coordinator, both players will be suspended from the next tournament they enter and the team will be fined \$100. If the team fails to show up for a 2<sup>nd</sup> time during the 2019/20 season and does not notify VWA or tournament staff, they will be fined \$300 and be suspended from playing on the Tour for the remainder of the season.

VWA will deal with legitimate reasons for not notifying staff on a case-by-case basis.

Any team that fails to attend will be emailed by Volleyball WA within 48 hours of the completion of the entire tournament and invoiced for their fine, in due course.

*For penalties regarding not fulfilling duty requirements please see section 22.*

## 13. COMPETITION FORMATS

ATABT's competitions will be split broadly into three categories with the following characteristics:

- **Elite (AAA and AA):**
  - Matches without a time limit
  - Full scoring
  - Maximum of 4 matches per day
  - Potential for competing on both days in a weekend
  - 1 day tournaments will also be used throughout the season (AAA on one day and AA on another day)
  - Attendance at technical meetings (If applicable) are compulsory (At least one player must be present)
- **Juniors (Only applicable for Open format competition)**
  - Same as the Competitive grade
  - U15 will be permitted to play 3-aside depending on the number of entries in the U15 Division. (Please check the beach calendar for events that will have U15 & U17 Divisions).
  - U19 can choose to play in Competitive or Elite Division.
  - Uniforms are compulsory but different by category. Please check the uniform policy in section 18 – "Playing Uniforms".

VWA will implement a range of competition formats throughout the 2018/19 season. These include:

- **Pool play progressing into single elimination finals:**  
Teams will be placed into pools. Depending on the grade and style of competition, teams will progress into a play-off game to decide rankings or progress in to finals.
- **Double elimination with a play-off:**  
Teams will compete in a format, which will see them eliminated from the draw following two losses. Any team who loses their first two matches will compete in a match to determine their ranking.
- **Swiss Format:**  
Teams will compete in all the matches of a single elimination tree to achieve a ranking from first through to last.

## 14. FORMAT BY ROUND

### ATABT Round #1- City Beach (Inner City Beach/ Sandsport) - TBC

The tournament will adopt the following format irrespective of elite or competitive formats:

Teams will be placed in pools of 4 teams;

- Any over flow will be pools of 5 teams.
- The first day of the tournament will be split into two halves, with three pools playing on two courts, in each half of the day.
- Matches will be best of three sets (15, 15, 12 uncapped), with a 45 minute time-slot for each match. For finals day, matches will be best of three sets (15, 15, 12 uncapped) without a time limit.
- The top 24/32 teams (depending on the size of the draw - above 51 teams per gender will mean the top 32 teams progress) will progress to single elimination on the Sunday. A minimum of two teams will progress from each pool.
- All teams will be assigned an individual finishing position. Teams finishing in the same position in the draw will be ranked based on point percentage during their pool play.

### ATABT Round #2- Mandurah (TBC)

Round #2 will be a 1 day format with both genders of AA playing on Saturday and Both gender of AAA will be playing on Sunday. Both Divisions will consist of a maximum of 12 teams per grade (Please read section 16 for team placings for round 2) and will follow the criteria set for Elite competition. This includes:

- Matches without a time limit
- Maximum 4 matches per day
- All finals will be on the same day.
- 

Depending on the number of entrants, the grade will be divided into 4 pools of 3, with the top team in each pool progressing through to the semi-finals. The remaining teams will compete in play-off games to determine their ranking. Each tournament will be considered on a case-by-case basis, by the following as we are unclear of the amount of teams per tournament:

- Amount of teams entered
- Amount of quality courts available.

### Round #3 – City Beach (TBC)

Round #3 will follow a one day graded format where the top 24 teams will be seeded in AAA and AA) 12 teams per division. All Pool games will be played on the Saturday for all divisions and finals will be on the Sunday. This round will follow the criteria set for Elite competition. This includes:

- Matches without a time limit
- Full scoring
- Maximum 4 matches per day

**Round #4 Busselton & Round #6 Bunbury**

This tournament will allow competitors to choose Elite or Competitive divisions. Both divisions will be pool play, with single elimination finals. Elite teams will not be guaranteed a match on the second day of the tournament however depending on court availability play-off games may be organised on the Sunday. Every endeavor will be made to ensure that competitive teams will have a match on the second day of the tournament. This competition will have Elite and Competitive, Junior and a masters division.

**Elite divisions**

The tournament will adopt the following format:

Teams will be placed in pools of 4 teams;

- Any over flow will be pools of 5 teams.
- The first day of the tournament will be split into two halves ( Morning and afternoon session depending on numbers)
- Full scoring (Best of 3 sets first two sets to 21 and last set to 15 uncapped)
- Maximum 4 matches per day

**Competitive, Junior and Masters Divisions**

- Matches will be best of three sets (15, 15, 12 uncapped) untimed
- Later start times where possible

**WA Open ATABT Round #5 - Scarborough**

Open division (AAA & AA) and Competitive division (A and below) will play over 2 days, 15<sup>th</sup> and 16<sup>th</sup> February 2020. If possible, the Competitive division will have their finals on the same day and finals for Elite divisions will be played on Sunday 15<sup>th</sup> February 2020):

- Maximum 32 team draw per gender.
- 8 pools of 4 teams with the top 2 teams progressing to single elimination.
- If more than 32 teams enter AAA the teams playing will be determined by the Australian Beach Volleyball Ranking System – there will be no qualifier.
- All players will be required to purchase an ATABT Playing Top (interstate players only require one top per player).

The AA grade will follow the below format:

AA will consist of 12 teams per grade and will follow the criteria set for Elite competition. This includes:

- Matches without a time limit
- Full scoring (Best of 3 sets first two sets to 21 and last set to 15 uncapped)
- Maximum 4 matches per day

The grade will be divided into 4 pools of 3, with the top team in each pool progressing through to the semi-finals. The remaining teams will compete in play-off games to determine their ranking.

A grade and below will fall under different criteria:

- Time limited matches
- Modified scoring

- Minimum of 3 matches per day
- Tournament will be scheduled to finish in one competition day

### Round #7 – City Beach

Round 7 will be a 1 day graded format with top 24 teams seeded into AAA (both genders will play on Saturday) and AA (Both genders on Sunday) with all finals on the same day. Both Divisions will consist of a maximum of 12 teams per grade and will follow the criteria set for Elite competition. This includes:

- Matches without a time limit
- Full Scoring ( Best of 3 sets first two sets to 21 and last set to 15 uncapped)
- Maximum 4 matches per day

### Round #8 – Sorrento/ Mullaloo (TBC)

Round #8 also the last round of the season will be a two day graded format competition similar to round #3. All divisions and genders will play on Saturday with finals on Sunday. This round will also have a social function on Sunday after the competition (Venue TBC). This competition will follow the criteria set for Elite divisions which is as follows;

- Matches without a time limit
- Full Scoring ( Best of 3 sets first two sets to 21 and last set to 15 uncapped)
- Maximum 4 matches per day

## 15. POOL PLAY POINTS ALLOCATION

**Win** – 3 points, **Loss** – 1 point and **Forfeit** – 0 Points.

There are no drawn matches. For time limit games; if the set score is 1-0 the team who won the first set, wins the match irrespective of the point scored in the second set. If the set score is tied when time expires, teams will finish the current point (if the whistle has blown to start play prior to the announcement, then that point needs to be completed) and a lead of two points needs to be achieved to decide the match, even if that means additional points need to be played.

If teams in the same pool finish pool play with equal points, their positions will be determined by games won percentage, then by sets won percentage, then points won percentage. Percentages will be calculated by the formula: *wins (games, sets or points) – losses (games, sets or points) / total played (games, sets, or points)*.

## 16. PLACEMENT OF TEAMS INTO GRADES / SEEDING

The ATABT is using the same points system for 2018-19. Outlined below is how seed-index will be calculated, by taking the average finishing position of individuals within their teams VWA will calculate event seeding and tour ranking. For more details on how seed index points are awarded in 2019-20 and will be adopted from 2018-19 please see section 29.



Division allocation and team seeding will be determined using the following method:

**Points:**

- For entry and seeding in all events that an individual player participates in, their seeding index will be calculated by taking the average of their best three results, from the last four tournaments they played in the last 365 days (at time of tournament commencement).
- If four events haven't been played, the seeding index will be based on an average seed index from the events from the last 365 days (at time of tournament commencement).
- In the event that teams are tied on the seed index, a drawing of lots will occur to separate the teams.
- The seed index will then be averaged with their playing partners for that event to form the team seed index.
- Please note for WA Open, AAA grade seeding will be formulated using the Australian Beach Volleyball Ranking System unless otherwise specified by VA or VWA. Any ties in this system will be broken by VWA seeding.

The following regulations will be used to ensure that teams play in the grade which is suitable for their skill level and will allow moves between grades, if necessary. It will also allow new teams to find an appropriate skill level if joining the tour mid-season.

New teams, where neither player has played in ATABT, will be placed into the lowest seeding position for the event that they have entered. Teams in this situation can choose to apply for a wildcard or seeding wildcard – please refer to sections #8, #9 & #10 for more details.

Teams which have one new player will have their team seed index calculated in the following way: The average of: The seed index of a player who has played in last 365 days + (Lowest seed index in the draw + 1)

**Promotion:**

- Teams can earn the right to be promoted to the division above by making the grand final in any division. Teams can only exercise this promotion right at the next scheduled tournament and in the team they played that grand final in. Please inform VWA by ticking the box when you complete entry for the next tournament.
- If the members of a team decide to play with different partners in the next tournament after having earned the right to promotion, then the right of entry to the next division above is withdrawn and entry will be considered by using points.
- Teams choosing competitive divisions cannot be promoted in the next event

To encourage teams to participate in the first event, the following process will be followed for ATABT Round #2:

AAA Grade will comprise of the:

- Top 8 teams that have nominated using the seeding policy.
- Round #1 highest ranked teams – excluding the teams who have entered Round #2 via the top 8.

- 2 wildcards (if not allocated, the next two Round #1 places will receive the positions).
- Teams must remain the same from Round #1 to Round #2 to exercise the right to claim their position in Round #2.

AA Grade will comprise of:

- The next 8 teams available from using the seeding policy.
- Round #1 next ranked teams – excluding those already placed in a division.
- 2 wildcards (if not allocated, the next two Round #1 places will receive the positions).
- Teams must remain the same from Round #1 to Round #2 to exercise the right to claim their position in Round #2.

## 17. POOL SEEDING DISTRIBUTIONS

We will adopt the Serpentine System for allocating seeds to pools as follows. See the below examples:

Pool	Divisions of 12				Divisions of 10 teams	
	A	B	C	D	A	B
Seed	1	2	3	4	1	2
Seed	8	7	6	5	4	3
Seed	12	11	10	9	5	6
Seed					8	7
Seed					10	9

Pool	Divisions of 16			
	A	B	C	D
Seed	1	2	3	4
Seed	8	7	6	5
Seed	9	10	11	12
Seed	16	15	14	13



## 18. PLAYING UNIFORMS

All players competing in the ATABT are required to wear the Alcohol. Think Again playing tops for all games.

The 2019/20 ATABT uniforms tops are the same as those worn on the 2018/19 tour. No other uniform is permitted on 2019/20 ATABT.

Male players are required to wear a singlet, while female players have the choice of a crop top or a ladies cut singlet.

Uniforms are available from the VWA office and at all events.

For AAA/AA Grade at rounds #1, #2, #3, #5 WA Open, #7, #8 and Elite entrants into Busselton and Bunbury:

- Individuals within a team must wear the same colour ATABT playing top.
- To avoid colour clashing with opposing teams, all teams in these grades must purchase two tops in different colours.
- Male teams must wear shorts of a similar colour and style.
- Female teams must wear shorts or bather bottoms of a similar colour (one player can have a different style to the other).
- Uniform requirements must be adhered to from the start of the 5 minute official warm-up.
- If the uniform requirement is not adhered to the team / teams in question will forfeit the match.
- Duty teams have a responsibility to ensure that this policy is adhered to.

For Competitive and junior division (U19, U17 & U15)

- Players must wear ATABT uniforms however players are permitted to wear unmatched colour uniforms.

### Special Uniforms

Extra under garments (tights, long sleeve t-shirts, etc) and head coverings will be permitted for religious, medical or climatic reasons. Please advise the Competitions and Events Coordinator if you know prior to the tournament commencing that these will be used consistently. The following are VWA's requirements:

- An ATABT playing top will be required to be worn over any such garments
- VWA would request where possible that players from a team have a similar colour and style to their garments

### **WA Junior Beach Volleyball Championships**

It is requested that teams in this event wear uniforms of a similar colour and style. Male players must wear a t-shirt or singlet for the event.

## **19. COMPETITION BALLS**

The ball to be used on the ATABT is the FIVB approved Mikasa VLS300 Beach Volleyball. This ball can be purchased directly from Volleyball WA.

## **20. RULES**

VWA will follow the rules commissioned by the FIVB. They can be found at:

[http://www.fivb.org/EN/Refereeing-Rules/RulesOfTheGame\\_BVB.asp](http://www.fivb.org/EN/Refereeing-Rules/RulesOfTheGame_BVB.asp)

## **21. DUTY REQUIREMENTS**

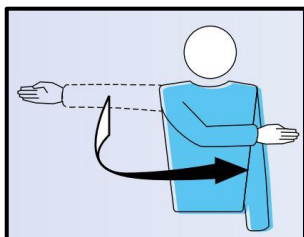
All teams will be assigned “duty” during a tournament, this means providing a referee and scorer for another game. If it is your first time on the beach and you are unsure about any of the duty responsibilities, please let our tournament staff know at the technical meeting. We ask that all duties are taken seriously and completed professionally to ensure a high quality competition for all players.

The top referee has the ultimate responsibility, but can take guidance from the scorer. If a referee is provided by VWA for the game, then the duty team must act as a 2<sup>nd</sup> referee and scorer.

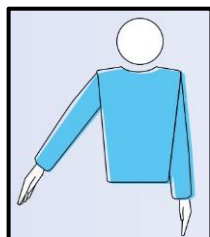
It is the responsibility of the duty team to ensure that games start on time. Teams should warm-up prior to the match and will only have a maximum of 5 minutes on court for spiking and serving practice. In un-timed matches, it is imperative that duty teams commence matches in accordance with the protocol advertised at the technical meeting. It is also important that the duty team ensures that all time-out breaks, set breaks and end changes are completed in the allotted time.

We request that the following hand signals are used:

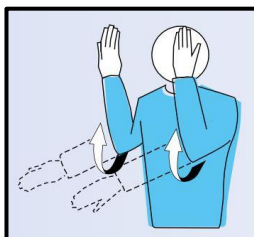
Authorization to serve



Ball in



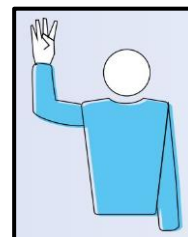
Ball out



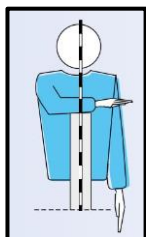
Ball touched



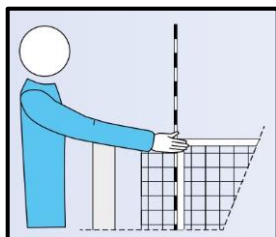
Four hits



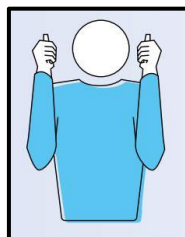
Reaching beyond net



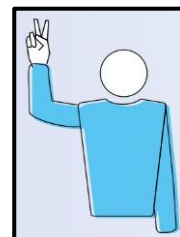
Net touch



Replay



Double contact



End of set



## 22. PENALTIES FOR NOT FULFILLING A DUTY

Penalties for not fulfilling your duty requirements at a tournament will result in a \$50 fine for the team and a 20% increase of seed index allocated for that event. Teams will be unable to enter another event until this fine has been paid.

If a duty team is not present, VWA will endeavor to supply a referee. However, on some occasions playing teams may be required to umpire and score their own game.

## 23. WHISTLES

VWA will not issue whistles to duty teams due to health regulations and the health risks associated with this. Whistles can be purchased in the administration tent at each tournament

## 24. COURT ALLOCATIONS

Players must play on the court allocated to them, unless the court presents a safety issue. Any safety issues should be reported to the Tournament Director, who will review the court and if necessary deem the court as 'unsafe' to play on and organise an alternative court.

## 25. FORFEITS

If a team is not present at the beach after the duty team has called playing teams to the court to commence play, this team loses the match.

The attending team will be awarded the win but will not receive any points for or against for the use of points percentage in pool play. If a game is forfeited after commencing, any points scored in the match up until that point will be allocated for point percentage.

## 26. LIGHT DISPUTES

Where lights are available, court lighting will be used to assist in the completion of the draw.

If in the event that the level of lighting may interfere with the completion of the match, the following steps will be taken:

- The Tournament Director will decide if the match is to continue.
- If the match is postponed, the Tournament Director will arrange a suitable time to reschedule.
- If the decision to reschedule the match is made during an incomplete set or at the completion of the set then the:
  - Set scores and point scores will stand.
  - If the break is longer than 4 hours, the game will restart

## 27. COACHES

Each team is permitted to elect one coach for each tournament that may be positioned in a designated area determined by Tournament Staff. This area is usually situated directly behind the player's time-out area or behind one of the base lines.

Coaches cannot enter the playing area after the spiking warm-up has commenced, until the completion of the match.

The coach's name must be supplied on all score sheets for the matches in which they are coaching.

Coaches are only allowed to “coach” during time outs or intervals and may not communicate with match officials (this includes criticism and/or dispute of the referee calls), opposing players and coaches.

Coaching includes all forms of verbal and non-verbal communication and interaction. If a coach’s name is not on the score sheet when the game commences, the referee should ask the coach to not coach during the game.

The players’ sanctioning scale will be applicable to a coach incurring in an infringement listed below.

- After receiving a red card, a coach repeating the same infraction will be removed from the remainder of the tournament.

Tournament removals will be reviewed by the VWA Beach Committee and VWA Coaches Committee.

#### **What a coach can do during a game:**

A coach may only speak to players during the following breaks in play:

- Prior to the match commencing
- During a time out
- During the break between sets

#### **What a coach cannot do during a game:**

- A coach may not speak to the opposing players or coaches.
- A coach may not question a referee decision directly.
- If either of the above occurs, the coach will be warned and if it persists, they will be penalized further.

## **28. FIRST AID SUPPLIES**

A basic first aid kit and ice is available from the tournament tent. All other first aid supplies, such as strapping tape, are to be provided by players.

## **29. POINTS ALLOCATION FOR SEASON RANKINGS**

This year the VWA Beach Tour has continued to use the seed index model. This means that teams (and the individuals within them) will be allocated a seed index position based on their finishing position. The lower a seed index rating the better a team’s position.

Point allocations for Round #1 will be as follows:

1st place will receive a seed index of 1.00. Each place thereafter will receive 0.625 points more than the placing before them. See the table below;

VWA Beach Open ATABT Round #1			
Finishing Position	Seed Index	Finishing Position	Seed Index
1	1.000	21	13.500
2	1.625	22	14.125
3	2.250	23	14.750
4	2.875	24	15.375
5	3.500	25	16.000
6	4.125	26	16.625
7	4.750	27	17.250
8	5.375	28	17.875
9	6.000	29	18.500
10	6.625	30	19.125
11	7.250	31	19.750
12	7.875	32	20.375
13	8.500	33	21.000
14	9.125	34	21.625
15	9.750	35	22.250
16	10.375	36	22.875
17	11.000	37	23.500
18	11.625	38	24.125
19	12.250	39	24.750
20	12.875	40	25.375

The reduced rate of decline is to encourage teams to play in Round #1 and will make this round comparable to rounds where a multi grade system exists. For this round 1<sup>st</sup> in competitive will receive the next ranking position after last in elite

The point allocations for the remainder of the ATABT will be as follows:

- 1<sup>st</sup> place in AAA will receive a seed index of 1.00.
- Each team (and both individuals within the team) thereafter will receive the seed index that is relative to their finishing position. If one team finishes in a position the seed index will change

- by one for the next team, if multiple teams finish in a position the seed index will change by the amount of teams that finished in that position for the next team.
- The seed index of teams finishing equal 3<sup>rd</sup> place in any grade other than AAA will be 1 point lower than the last placed team in the grade above it. The remaining teams (and both individuals within the team) will be awarded a seed index relative to this position

Please see the table below for more examples;

Regular Event Example Model					
	AAA Seed Index	AA Seed Index	A Seed Index	B Seed Index	C Seed Index
1	1	8	15	20	25
2	2	9	16	21	26
3	3	10	17	22	27
=3	3	10	17	22	27
5	5	12	19	24	29
=5	5	12	19	24	29
7	7	14	21	26	31
=7	7	14	21	26	31
9	9	16	23	28	33
=9	9	16	23	28	33
11	11	18			
=11	11	18			

The following model will not apply in the Round #4 where the 1<sup>st</sup> place in the competitive grade will receive the same ranking as last place in the elite grade.

### 30. PRIZE MONEY

All information pertaining to cash prizes will be confirmed.

Team Placing	Round #5 WA State Open		Team Placing	Round 1 & Round 8 Team Prize Money	
	Team Prize Money				
	MEN	WOMEN		MEN	WOMEN
1 <sup>st</sup>	TBC	TBC	1 <sup>st</sup>	TBC	TBC
2 <sup>nd</sup>	TBC	TBC	2 <sup>nd</sup>	TBC	TBC
<b>TOTAL</b>			<b>TOTAL</b>		

### 31. RANKING POINTS FOR TEAMS ON NATIONAL TOUR

This does not apply for all 2018/19, except Round #7 – WA Open where the event will be seeded using the following unless otherwise specified by VWA:

- I. World Tour Points
- II. National Tour Points
- III. ATABT Seed Index

### 32. NATIONAL RATING SYSTEM

Details regarding Volleyball Australia's Australian Beach Volleyball Ranking System (ABVRS) can be found: [www.volleyballaustralia.org](http://www.volleyballaustralia.org)

### 33. PERSONAL SPONSORSHIP

The Competitions and Events Coordinator must be advised of all personal sponsorship/s, a minimum of 9 days prior to an event. They have a responsibility to ensure there is no conflict with tournament sponsors.

The tournament's sponsor will take precedence over personal sponsorship/s in relation to singlets and tops. Personal sponsorship details may still be worn on other garments such as shorts, hats/headwear, towels, bags, transferable tattoo's, armbands etc. We encourage athletes to be proactive in obtaining personal sponsorship.

### 34. POLICIES

All of VWA's policies can be found at: [http://www.volleyballwa.com.au/?page\\_id=309](http://www.volleyballwa.com.au/?page_id=309)

- Alcohol Policy
- Anti-doping Policy
- Anti-Harassment Policy
- Communication Policy
- Concussion Management Policy
- Cyber Safety Policy
- Diversity & Inclusion Policy
- Event Risk Management Plan
- Hot Weather Policy
  
- Information Communication Technology Policy



- Lightning Policy
- Match Fixing Policy
- Misconduct Code
- Member Protection Policy (including VWA codes of conduct)
- Needle Stick Injury Policy
- Occupational Health and Safety
- Pregnancy in Sport Policy
- Privacy Policy
- Social Media Policy
- State Team Selection Policy

### 35. SUN PROTECTION POLICYTERMS AND CONDITIONS

#### Alcohol. Think Again

Alcohol may not be consumed at events. No player is to participate in an event while under the influence of alcohol or any other banned substances. Failure to comply will mean disqualification from an event and possible further sanctions may be imposed.

#### Smoke Free

All Alcohol Think Again 2017/18 WA Beach Volleyball Tour events are Smoke Free.

#### Players Responsibility

All players are responsible for being informed of all relevant information regarding events, including start times, locations, check in etc. **Ensure you check in with the Tournament Director before leaving the venue for multi-day events.** If you are unsure of the location or your starting time, please call Volleyball WA on 9228 8522 before 5pm on the Friday before the tournament or check the website.

#### Grievance or Complaints

Any player with a legitimate complaint should communicate it to the Tournament Director, at the tournament, or to the Competitions and Events Coordinator outside tournament times. If necessary, the Tournament Director will consult with the Beach Volleyball Committee Chairperson or Representative for a resolution. Under no circumstances will abusive actions towards staff or other competitors be tolerated.

### Players Code of Behaviour

Players must accept referees' decisions with respectful conduct and without dispute. In case of doubt, clarification may be requested. The behaviour code applies from warm-up. If any penalties are issued, it must be recorded on the score sheet.

ALL PLAYERS WILL ABIDE IN A SPORTSPERSON-LIKE MANNER, IN ACCORDANCE WITH THE FIVB BEACH VOLLEYBALL RULES, THE VWA MEMBERS PROTECTION POLICY AND CODES OF CONDUCT.

Unfortunately in past tour events, some equipment (such as tour balls) has gone missing. VWA has ZERO TOLERANCE on stealing. Any person to be found in possession of VWA equipment without permission will face automatic suspension from future tour events.

We ask all players to respect VWA equipment. If equipment continues to go missing, we will be forced to increase your tournament fees to cover costs.

### 36. DO YOU NEED A PARTNER / TEAM?

If you need a partner, Volleyball WA recommends you attend the training sessions at The Hub Beach Volleyball Club, West Coast Sting Volleyball Club or Northshore Volleyball academy. This is the best way to find someone to play with for an upcoming event. It will be up to the individuals to contact potential partners. Volleyball WA is NOT responsible for matching up players, but will assist where possible.

### 37. VOLUNTEERS AND PAID WORK

Opportunities exist for people wanting a variety of work, such as set-up crew or general work experience, during the season. If you are interested in gaining some experience in the sports administration industry, or are looking for some volunteer or part-time work please contact the VWA on 9228 8522 or visit our website [www.volleyballwa.com.au](http://www.volleyballwa.com.au).

### 38. VWA CLAUSE

Any questions relating to the interpretation of these rules must be made in writing, to Volleyball WA via the Competitions and Events Coordinator ([competitions@volleyballwa.com.au](mailto:competitions@volleyballwa.com.au)).

Volleyball WA and its officers have the right to amend any of the above rules for the betterment of the Tour and will also decide on all matters which have not been covered by the Tour Handbook, or in the Official Beach Volleyball Rules. **Volleyball WA wishes you a successful and enjoyable season.**

# alcoholthinkagain

The Alcohol. Think Again campaign aims to decrease alcohol-related harm by reducing short-term and long-term harmful drinking.

The Alcohol. Think Again campaign is the community education and marketing component of the Western Australian Government effort to reduce the impact that risky alcohol use has on our community.

Alcohol. Think Again aims to reduce the level of alcohol-related harm that results from drunkenness by changing the drinking culture in Western Australia to support safer drinking environments and practices.

Research tells us that even with the best intentions, it can be difficult for responsible drinking to take place, if getting drunk is the accepted norm, there is social pressure to drink and the setting makes it easy to drink large amounts.

Changing our (community) acceptance of drunkenness and the problems that go with it is one of the most important parts of creating a less harmful drinking culture. To begin this change, the main strategy of the Alcohol. Think Again program is to use media and other information mediums to explain the problems related to the binge drinking culture and raise awareness about what causes these problems at a community level, rather than just focusing on the individual drinker.

Characteristics of drinking environments, community attitudes to drunkenness, the availability of alcohol, how alcohol is supplied, role-modelling, and alcohol advertising are just some of the factors that influence the drinking choices people make. These factors are also contributors to levels of alcohol-related harm and problems within the community.

For more information go to [www.alcoholthinkagain.com.au](http://www.alcoholthinkagain.com.au)



Mouth

Throat

# Alcohol causes cancer in more places than you think.

Breast

Liver

Pancreas

Bowel

To stay at low risk of developing alcohol-caused cancer and other diseases, health experts recommend having no more than two standard drinks on any day. To find out more, visit [alcoholthinkagain.com.au](http://alcoholthinkagain.com.au)